

## Economic Development

For decades, Rochelle has always been a City with its vision on the horizon, focusing on business growth and business retention. Our Community leaders understand that collaboration is essential to successfully create economic vitality and enhance the quality of life.

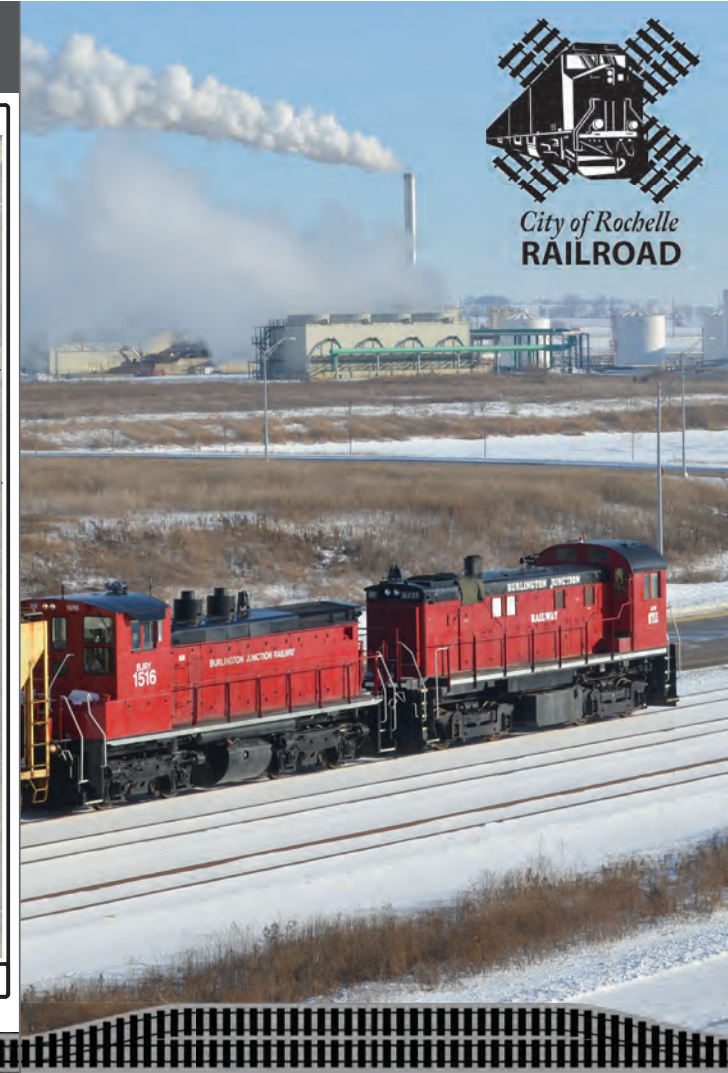
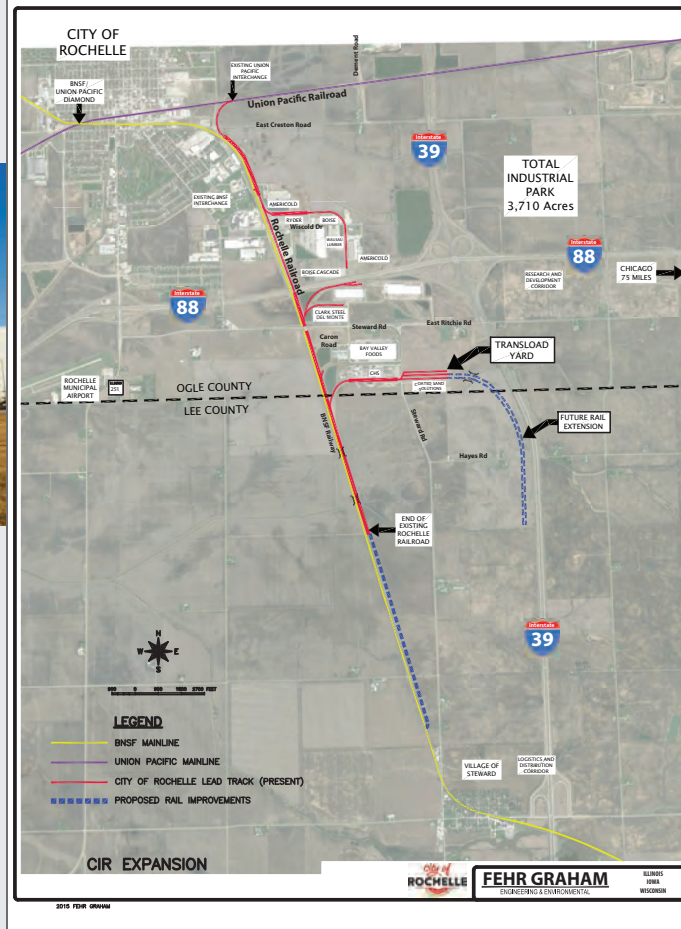


Illinois lies at the heart of the nation's transportation network and Rochelle is centrally located in the northern region. Rochelle businesses, residents, and visitors have access to one of the greatest multi-modal transportation systems in the nation including rail, highway, and air.

The City of Rochelle Industrial Railroad (CIR) has been the catalyst for economic development for the City of Rochelle for more than 30 years. The continuous expansion of the rail system has allowed rail-served industries to cut cost and increase efficiency in shipping and receiving operations due to the dual interchanges with Union Pacific Railroad and BNSF Railway. The CIR was strategically established and located on the growth edge of Chicago's westward commercial frontier to meet the demand of industries looking to locate outside the capacity-constrained Chicago area.

Rochelle's Dual Rail service area has nearly 2,000 acres of prime industrial development capacity adjacent to the Transloading Center. Shovel ready sites are being developed for any size of rail served industry.

## Rochelle, IL



**Contact:**  
**Burlington Junction Railway**  
 319-753-6157  
[transload@bjryrail.com](mailto:transload@bjryrail.com)

**Rochelle Transload Center**  
**Freight Rail**  
 Multi-Modal - Switching - Transloading

**Contact: Jason Anderson, City of Rochelle**  
 815-561-2007  
[janderson@rochelleil.us](mailto:janderson@rochelleil.us)



## CIR Rail Service

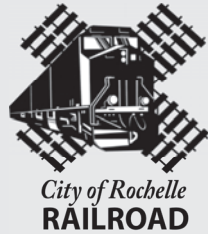


The City of Rochelle Railroad (CIR) is a "dual served" shortline railroad that provides equal access to both the main lines of the BNSF Railway (BNSF) and Union Pacific Railroad (UP). The CIR is owned by the City of Rochelle and the system consists of three interchange rail yards, two transloading yards and a total of twelve miles of track. The CIR is capable of handling unit trains which can be stored and switched daily in and out of Rochelle.

Burlington Junction Railway operates the CIR, providing interchange, switching and transloading services for 16 industries with over 6 million sq ft of industrial space and switching over 13,000 railcars per year.



We offer flexible and responsive switching services with our dedicated crews and locomotive power.



## Rochelle Transload Center



The Rochelle Transload Center (RTC) is a rail-truck transload site that can accommodate 60 cars on two tracks. This site is capable of handling shipments including dry bulk, liquid bulk, dimensional, oversized, machinery, metals and other commodities and products.

The Rochelle Transload Center (RTC) is easily accessible to all types of industries in the Midwest who seek a highly flexible, uncongested, customer service oriented rail and truck transloading operation. A turn-key option that offers door to door delivery to and from the Transloading Center is also available.



[transload@bjryrail.com](mailto:transload@bjryrail.com)

## Rochelle Transload Center

